



UNIVERSITI  
MALAYSIA  
KELANTAN

# **PEDESTRIAN & CYCLING GUIDES**

UNIVERSITI MALAYSIA KELANTAN





***PEDESTRIAN  
& CYCLING  
GUIDES***

**UNIVERSITI MALAYSIA KELANTAN**

*2022, UMK First Issue*

*All rights reserved. No part of this publication may be reproduced, stored in production transmitted in any form, whether electronic, mechanical, photocopying, recording or otherwise, without having permission from the Universiti Malaysia Kelantan.*

*Title: Pedestrian & Cycling Guides*

*Prepared By*

*Prof Madya Ts Dr Zuraimi Abdul Aziz  
Prof Madya Ts Dr Muhamad Saufi Che Rusuli  
Prof Madya Dr Mohd Asrul Hery Ibrahim  
Abd Aziz Mat Hassan  
Wan Mohd Safwan Wan Daud*

*Published By*

*Corporate Publishing Department  
Corporate Communication Centre  
Vice-Chancellor Office  
Universiti Malaysia Kelantan  
16300 Bachok  
Kelantan.*

*Tel: 09 – 779 7015  
Email: [bpk.pkk@umk.edu.my](mailto:bpk.pkk@umk.edu.my)*



# LIST OF CONTENTS

1.0 INTRODUCTION

---

2.0 OBJECTIVE

---

3.0 PEDESTRIAN WALKWAY

---

4.0 TYPES OF PEDESTRIAN WALKWAY

---

5.0 PEDESTRIAN GUIDE

---

6.0 BICYCLE PATH

---

7.0 BICYCLCE PARKING FACILITIES

---

8.0 CYCLING GUIDE

---

## 1.0 INTRODUCTION

*In 2020, Universiti Malaysia Kelantan (UMK) started the implementation of the Green Campus. Campus sustainability is UMK's initiative to address pollution issues and minimise the negative impact on the environment. It supports UMK in nurturing and educating campus residents on sustainable lifestyles towards a healthier environment and maintaining UMK greenery. To realise these goals and dreams, an integrated approach to mobilise a few initiatives needs to be implemented. Among them is strengthening the green transportation practices in UMK through UMK's initiative as a Pedestrian and Cycling Friendly Campus.*

## 2.0 OBJECTIVE

- 2.1 *Provide walking and cycling guides to Universiti Malaysia Kelantan campus residents.*
- 2.2 *Support the implementation of the Green Campus at Universiti Malaysia Kelantan.*



## 3.0

# PEDESTRIAN WALKWAY

*Providing pedestrian walkways is essential as one of the measures to improve and control the quality of the environment around the campus and to create social interaction among campus residents. Besides, it will also improve health, such as heart health, managing blood pressure, managing body weight, maintaining muscle strength and many more. Pedestrian walkways have a broad meaning and have a close connection and affinity with the environment, human activities and movements. In general, a pedestrian walkway can be defined as a path/street/space/footpath/special paved lane designed/ specifically prepared for pedestrian use.*

## 4.0

# TYPES OF PEDESTRIAN WALKWAYS

*Pedestrian walkways play an important role in maintaining the safety of pedestrians while walking. Pedestrian walkways are specifically provided for pedestrians so that campus residents can follow the prescribed routes and be safe. Efficient walkways will encourage campus residents to walk to college or work comfortably. Therefore, the planning and formation of conducive and user-friendly walkways is one of the indicators that can be used as an important element in forming a sustainable campus. There are several types of walkways around the campus.*

### 4.1 Sidewalk

*It is a particular space for pedestrian use located between a road and a building. Sidewalks are the most crucial space around campus. But it is not a formal type of route because often, the activities held along this route hinder the pedestrian's movement.*

#### 4.2 Pedestrian Zone

*The pedestrian zone in the campus area is a space where vehicles are not allowed to enter.*

#### 4.3 Special Pedestrian Walkway

*This type of pedestrian walkway is reserved for pedestrians only, while motorised vehicles are not allowed to go through this area. This route was created to encourage campus residents to walk. With this unique pedestrian walkway, the level of comfort and safety of campus residents will be more guaranteed.*

#### 4.4 Roofed Pedestrian Walkway

*The walkways provided are equipped with a roof with an attractive design. It is very comfortable to use because of its characteristics suitable for Malaysian weather during the hot and rainy seasons. There are several locations in the campus area that provide covered walkways.*

## 5.0 PEDESTRIAN GUIDELINE

*Campus residents need to abide by the rules so that pedestrian safety can be maintained. Here's a guide to pedestrians who use the sidewalks around campus.*

5.1 *Pedestrian walkways in the campus area are only allocated to pedestrians. Therefore, cycling activities and motorcycles, as well as parking, are not allowed.*

5.2 *Only the fire department, ambulance and police vehicles are allowed on the sidewalk during emergencies.*

5.3 *Campus residents must always look left, right, and left again before crossing the street.*



- 5.4 *Campus residents should only cross the street at a marked intersection or intersection.*
- 5.5 *Watch out for vehicle turning. Make sure pedestrians can be seen so the driver will be ready to stop the vehicle if pedestrians are passing by.*
- 5.6 *Do not wear headphones or talk on a mobile phone while walking.*
- 5.7 *It is recommended to wear brightly coloured clothing when using the sidewalks to cross the street at night.*
- 5.8 *Pedestrians should cross the street in well-lit areas at night.*
- 5.9 *Always walk on the sidewalk. If there are no sidewalks, pedestrians have to walk in the opposite direction.*
- 5.10 *Don't just rely on pedestrian signals. Make sure the vehicle stops before crossing the road.*



## 6.0 BICYCLE PATH

*The use of bicycles today for recreational purposes, exercise and public transportation is growing and popular among the community in Malaysia. Cycling is an environmentally friendly mode of transportation. By cycling, we contribute to carbon reduction or pollution. In general, a bicycle path can be defined as a path or road or a special paved space or lane designed or specifically provided for cyclists. There are several types of bicycle paths available on campus.*

### 6.1 Bicycle Lane

*Roads within the campus area are gazetted for cyclists only.*

### 6.2 Shared Lane with Pedestrian

*The bike path is adjacent to the pedestrian path within the road boundary area. The bike paths provided are separated by pedestrian paths in the campus area.*

### 6.3 Separate Roadside Bicycle Lane

*The bicycle lane provided is separated from the road border, but it's still within the curbside border of the road. These lanes are provided on campus roads with spacious curbside.*

### 6.4 Controlled Lane

*Lanes are provided at the side of the road but, its boundaries are provided with dividers such as bumps, median and strips. This lane has safety features to ensure the safety of bicycle users around the campus.*

*Bicycle parking facilities are an essential element in bicycle route planning as it helps increase the level of safety and comfort to campus residents who use bicycles. Adequate bicycle parking facilities in strategic locations can attract campus residents to use bicycles for their activities. Safety aspects need to be considered in planning bicycle parking facilities. Clear signage indicating bicycle parking should be provided to make it easier for campus residents to use bicycles. The following factors need to be considered in providing bicycle parking facilities.*

7.1 *Easily Seen*

*Bicycle parking racks must be easily seen by campus residents using bicycles. This easily seen location can prevent theft and vandalism.*

7.2 *Security*

*Adequate supervision and aspects of lighting are essential for the safety of campus residents and bicycles.*

7.3 *Weather Protection*

*Provide weather-protected bicycle parking facilities if suitable, for example, a covered bicycle parking lot.*

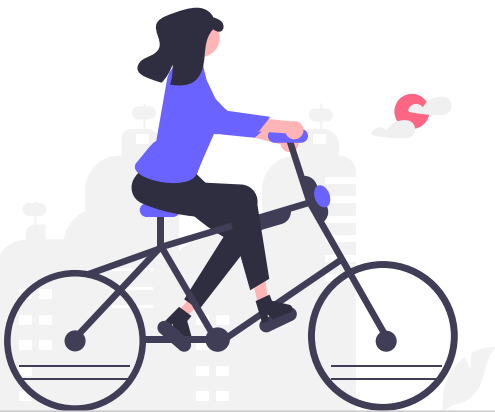
7.4 *Enough Space*

*The placement of bicycle parking racks must not obstruct pedestrian walkways. Adequate space around the rack is required to not to interfere with the movement of vehicles in the parking area.*

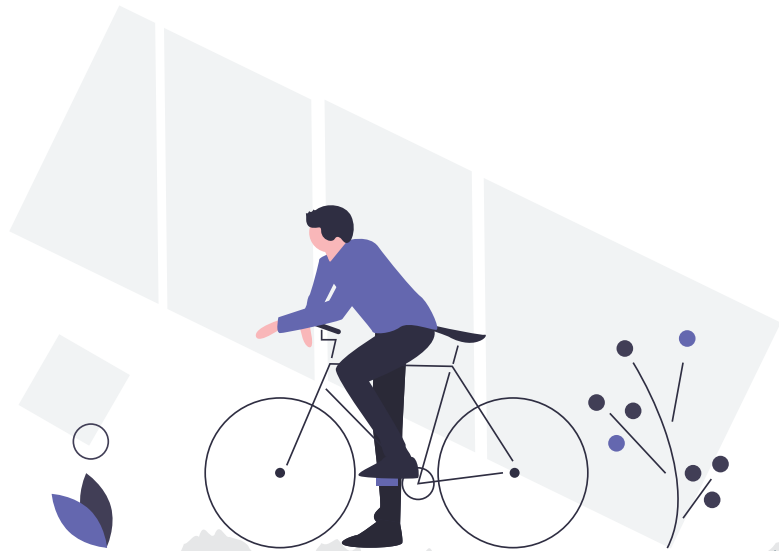
## 8.0 **CYCLING GUIDELINES**

*Cycling activities around the campus not only contribute to energy saving but it can also help in reducing air pollution. However, the safety of using bicycles around the campus should be prioritised by campus residents.*

- 8.1 *Make sure campus residents can be seen by other road users while riding bicycles, especially at intersections.*
- 8.2 *Make sure campus residents ride their bikes according to the flow of traffic and not against it.*
- 8.3 *Campus residents should ride bikes in the bicycle lane. This is because riding a bicycle on the sidewalk causes motorists to be overlooked, especially cyclists who ride against the flow of traffic.*
- 8.4 *Campus residents must obey traffic signs and signals. It is also encouraged to observe traffic conditions, including pedestrians, while riding bicycles around the campus.*
- 8.5 *Make sure campus residents ride bicycles on the paths provided. Campus residents must follow the campus road rules by cycling on the left side of the road and signalling when turning.*
- 8.6 *If cycling at night, campus residents must use headlights and taillights, wear reflectors and brightly coloured clothing.*



- 8.7 *Avoid using headphones or talking on a cell phone while cycling.*
- 8.8 *Make sure everyone, especially motorists, can see campus residents cycling and know the direction one is heading.*
- 8.9 *Make sure campus residents are careful at intersections and entrances as many collisions between other vehicles and bicycles occur, especially when motorists or cyclists make turns.*
- 8.10 *Make sure campus residents who ride bikes are always on the bicycle path.*





**ENTREPRENEURSHIP**  
*is our thrust*



OfficialUMK  
umk.edu.my

